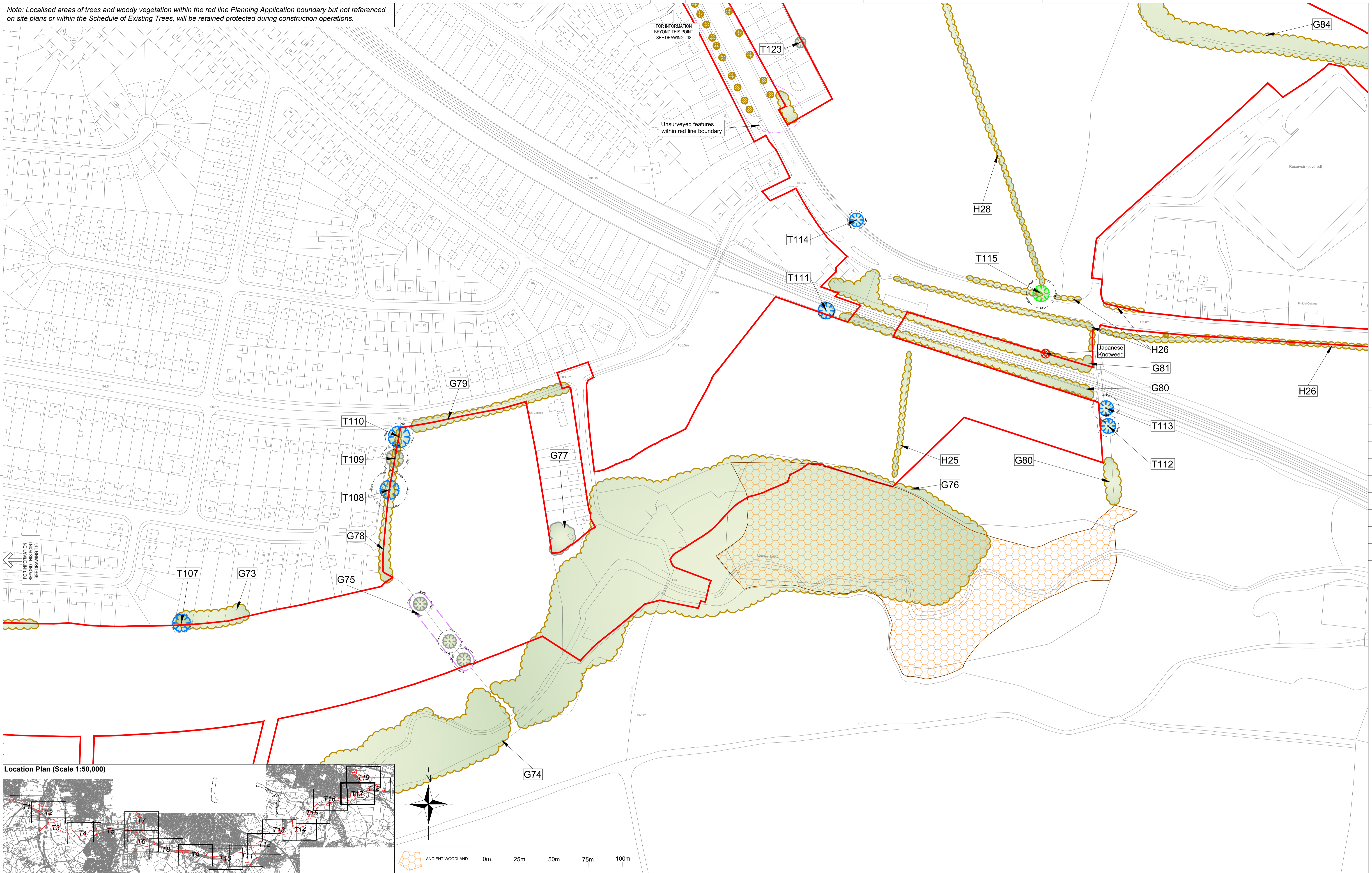


Note: Localised areas of trees and woody vegetation within the red line Planning Application boundary but not referenced on site plans or within the Schedule of Existing Trees, will be retained protected during construction operations.



Revision Details			
By	Date	Check	Suffix
CC/TA	15/10/13	B	
CC/TA	23/09/13	A	

LEGEND	
	A - CATEGORY TREES, GROUPS & HEDGES (HIGH QUALITY & VALUE)
	C - CATEGORY TREES, GROUPS & HEDGES (LOW QUALITY & VALUE)
	B - CATEGORY TREES, GROUPS & HEDGES (MODERATE QUALITY & VALUE)
	U - CATEGORY TREES, GROUPS & HEDGES (UNSUITABLE FOR RETENTION)
	UNCATEGORISED TREES, GROUPS & HEDGEROWS AS DEFINED BY TOPOGRAPHICAL SURVEY OR ESTIMATED ON SITE
	INDICATES ROOT PROTECTION AREAS - AS DEFINED BY BS 5837:2012
	PLANNING BOUNDARY

Note: Tree categories as defined by BS5837:2012. Plans to be read in conjunction with URS Tree Survey Report.

Job Title  
**A6 TO MANCHESTER AIRPORT RELIEF ROAD**

Drawing Title  
**TREE SURVEY PLAN (SHEET 17 OF 19)**

Scale at A1 1:1250 (or as shown)			
Drawn CCC	Approved AK	Originated PLY LAND	Date 09/09/13
Stage 1 check TA	Stage 2 check		

URS Infrastructure & Environment UK Limited 4th Floor, Bridgewater House 100 Wood Street Manchester, M1 6LT United Kingdom T +44 (0)161 975900 F +44 (0)161 975909 www.ursi.com	
Drawing Number <b>47064524 - T17</b>	Rev <b>B</b>



THIS DRAWING MAY BE USED ONLY FOR THE PURPOSE INTENDED AND ONLY WRITTEN DIMENSIONS SHALL BE USED

Plot Date : 47064524 - TREE SURVEY PLAN

DB1H